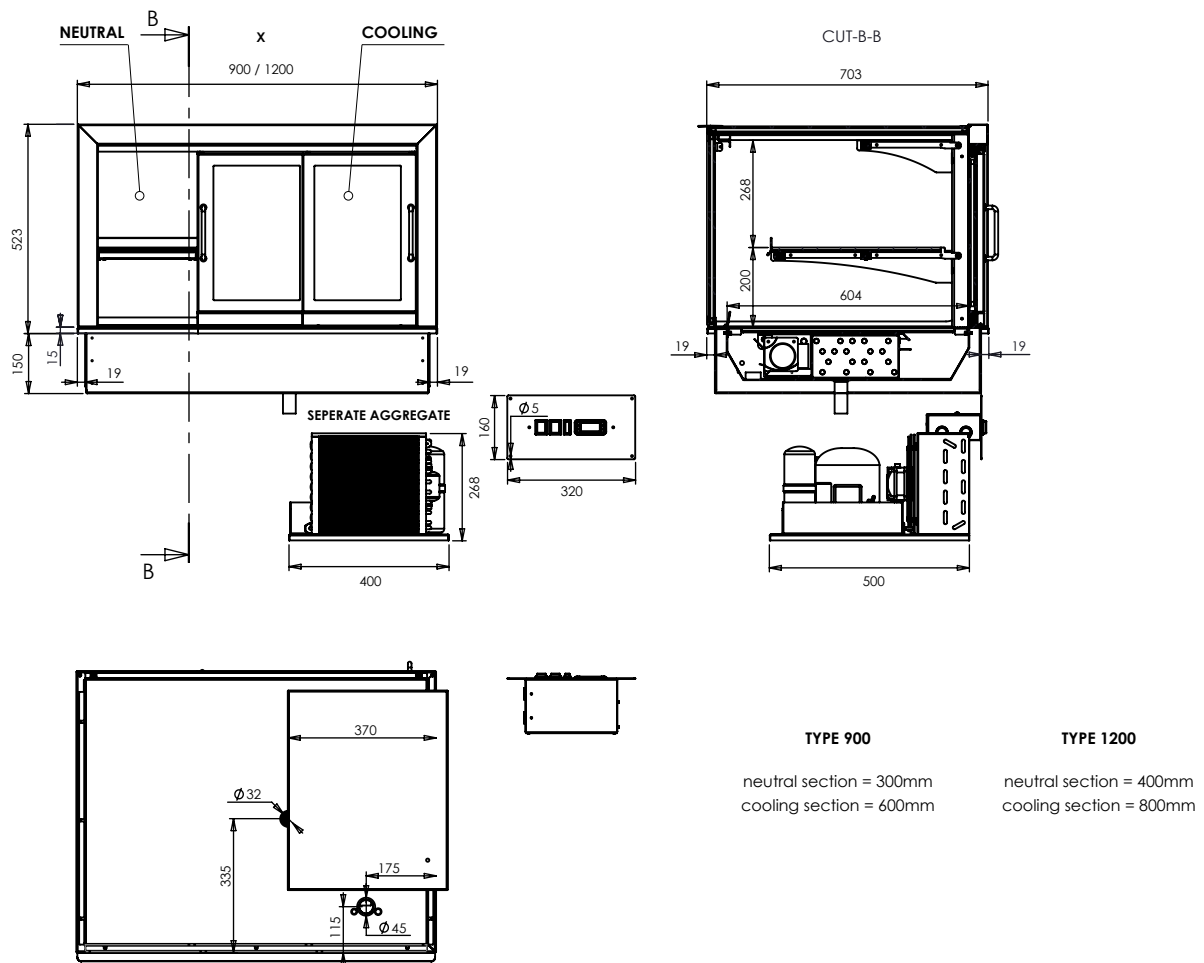
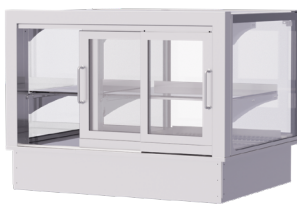


### Technical drawing



### Illustrative picture



### Specification list

Outside dimension:

Width (x) [mm]	900	1200
Depth (y) x Height (z) [mm]	703 x 673 +268	703 x 673 +268
SPL (distance 1m)	35 - 50 dB(A)	
Temperature	+3°C ~ +8°C	
Cooling medium	R290	
Refr. capacity (evap. @ -10°C)	0,9kW	
Voltage	1, N, PE ~ 230V, 50Hz	
Power input	0,67kW	
Power consumption	4,7A	