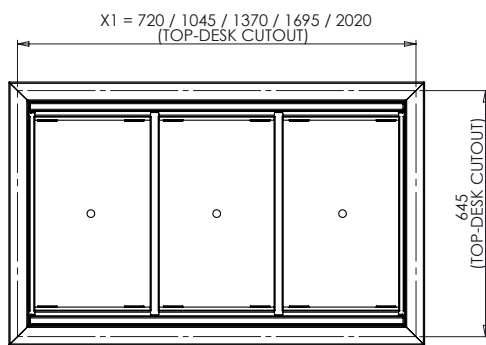
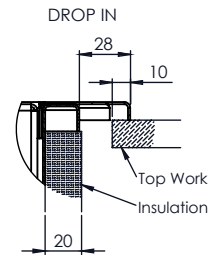
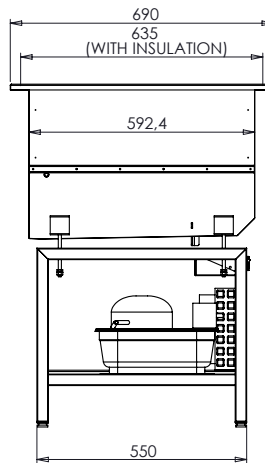
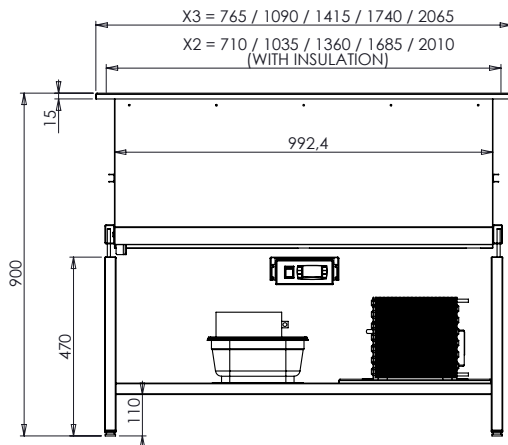


# GN Cooling bath - ventilated

Technical drawing



GN2 = X1=720; X2=710; X3=765;  
 GN3 = X1=1045; X2=1035; X3=1090;  
 GN4 = X1=1370; X2=1360; X3=1415;  
 GN5 = X1=1695; X2=1685; X3=1740;  
 GN6 = X1=2020; X2=2010; X3=2065;

Illustrative pictures



## SPECIFICATION LIST

SELF CONTAINED	I.	II.	III.	IV.	V.
Catalog number					
<b>Outside dimension:</b>					
Width (x) [mm]	765	1090	1415	1740	2065
Depth (y) [mm]	690	690	690	690	690
Height (z) [mm]	900	900	900	900	900
Temperature (range)	3 - 8°C				
Cooling medium	R404A   1,2Kg	R404A   1,2Kg	R404A   1,2Kg	R404A   1,4Kg	R404A   1,6Kg
Refr. capacity (evap. @ -10°C)	0,7 kW	0,9 kW	1,1 kW	1,3 kW	1,6 kW
Compressor	SC10CL	SC12CL	SC15CL	SC18CL	SC21CL
Condenser	STVF-139	STVF-139	STVF-194	STVF-194	STVF-194
Control (DIXELL)	XR70CX	XR70CX	XR70CX	XR70CX	XR70CX
Voltage	1, N, PE ~ 230V, 50Hz				
Power input	0,5 kW	0,6 kW	0,75 kW	0,9 kW	1,1 kW
Material	Stainless Steel				
Spare parts*					